

Chesapeake



Living is easy when you own the Chesapeake. With low maintenance and easy upkeep, this home is perfect for the homeowner that's on the go! A large living room and kitchen allow for easy entertaining and plenty of room for your family to live comfortably. The split bedroom layout offers maximum privacy, while the large rear entry area with a built in provides a place for shoes, backpacks, and coats. With so many great features, who wouldn't love to call the Chesapeake home.

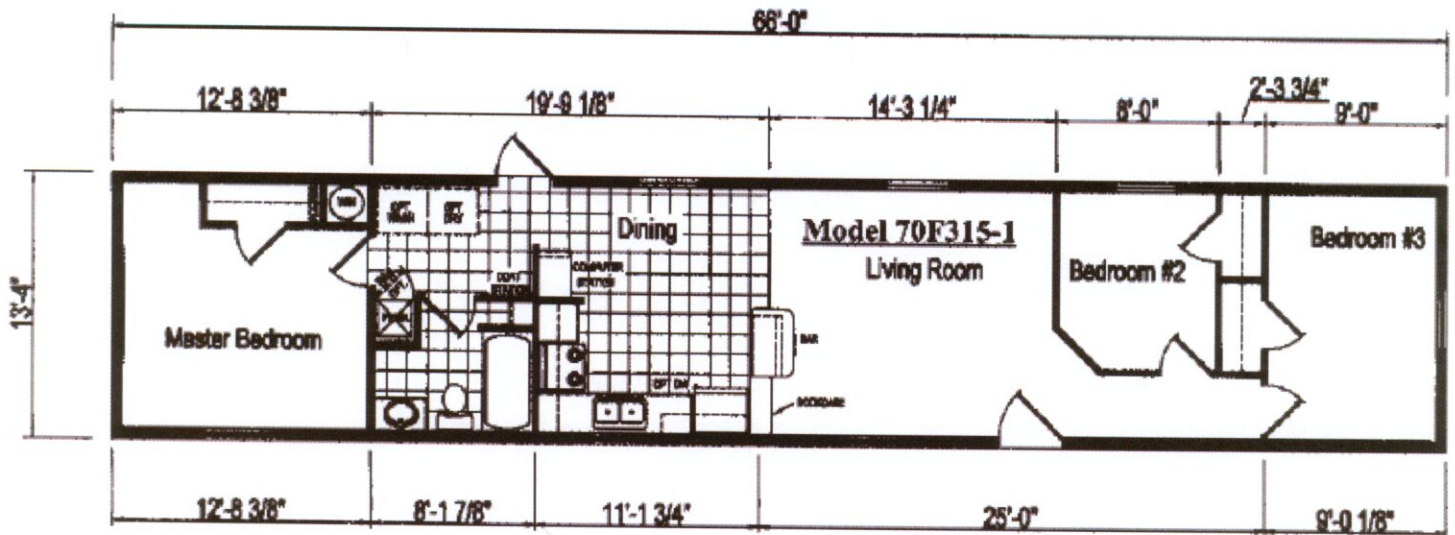


Definitely More Than You Expect

11049 N. Eagle Valley Rd. Howard, PA 16841
Phone: (570) 962-3348 Fax: (570) 962-6405
kwillar@ridgecresthomesales.com

www.ridgecresthomesales.com

Chesapeake



Model: 70F315-1
Bedrooms / Baths: 3/1

Size: 880 sq. ft.
Dimensions: 14 x 66

Optional Features as Shown in Model

American Cherry MDF Cabinets
Programmable Thermostat &
Nightlight
Foyer Entry Tile
Dishwasher
36" Steel Front Door w/Sunburst
Furnace Door
Low E Thermal Windows

White Ceiling Fan w/Light
Central Line Drops for TV &
Phone
40 Gal. Electric Water Heater
Exterior Water Faucet
60" One-Piece Fiberglass Tub
Tub Drape

Eagle River 12 Month Limited Warranty

All Eagle River Homes come with a 12 month limited warranty from the day you receive the keys. Any structural or operational defects reported to RidgeCrest Home Sales within 12 months will be corrected without charge by our in house service crew.