

# Santa Fe



Classy décor and a great layout make this a perfect home for upsizing, downsizing or anywhere in between! Cooking dinner is a breeze in this kitchen. With a workable layout, upgraded cabinetry, and a pass through to the living area, you'll enjoy being the cook! A sliding glass door allows plenty of light and a great place to build your future deck! The master suite includes a large walk in closet, soaker tub, and separate shower, while the extra bedrooms are spacious for kids, guests or an office. Affordably priced, this home offers upscale living for a down to earth budget!

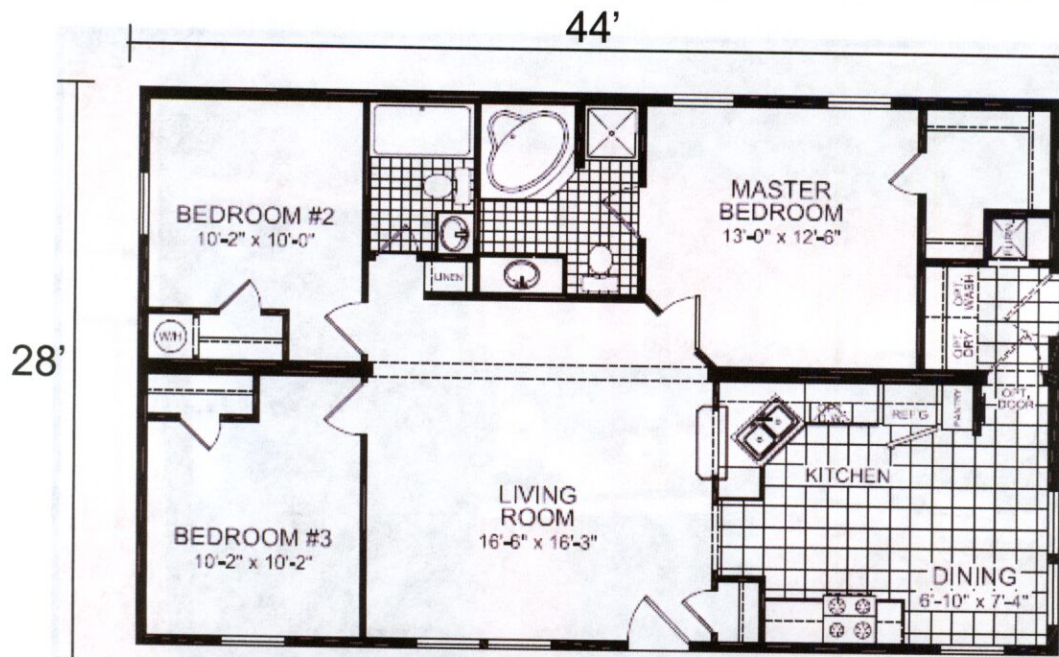


**Definitely More Than You Expect**

11049 N. Eagle Valley Rd. Howard, PA 16841  
Phone: (570) 962-3348 Fax: (570) 962-6405  
kwillar@ridgecresthomesales.com

[www.ridgecresthomesales.com](http://www.ridgecresthomesales.com)

# Santa Fe



The Santa Fe features 3 bedrooms, 2 baths and approximately 1,173 sq. ft.

## Optional Features as Shown in Model

50 Gal. Electric Water Heater (\$117)	Dishwasher (\$403)
Exterior Faucet (\$48)	Black Cabinet /Drawer Knobs (\$50)
9 Lite Steel w/Storm Door (\$310)	Oak Raised Panel Kitchen Cabinets (\$625)
6 Panel White Doors (\$155)	Ceramic Backsplash Kitchen (\$225)
200 Amp Service (\$85)	Ceramic Edging Kitchen (\$175)
2 Phone Jacks (\$90)	Crown Molding w/Rope (\$87.15)
2 TV Jacks (\$90)	Oak Raised Panel Bathroom Cabinets (\$75)
Foyer Entry Vinyl (\$48)	Porcelain Sinks in Baths (\$84)
Sliding Patio Door in Dining Room (\$371)	Material Escalator Subject to Change (\$2,346)

*Champion Homes includes a limited 12 month warranty covering the materials and workmanship of this home. RidgeCrest Home Sales in house service crew will repair all warranty issues at no cost to you for the first 12 months you own your home.*



## Definitely More Than You Expect

11049 N. Eagle Valley Rd. Howard, PA 16841  
Phone: (570) 962-3348 Fax: (570) 962-6405  
kwillar@ridgecresthomesales.com

[www.ridgecresthomesales.com](http://www.ridgecresthomesales.com)